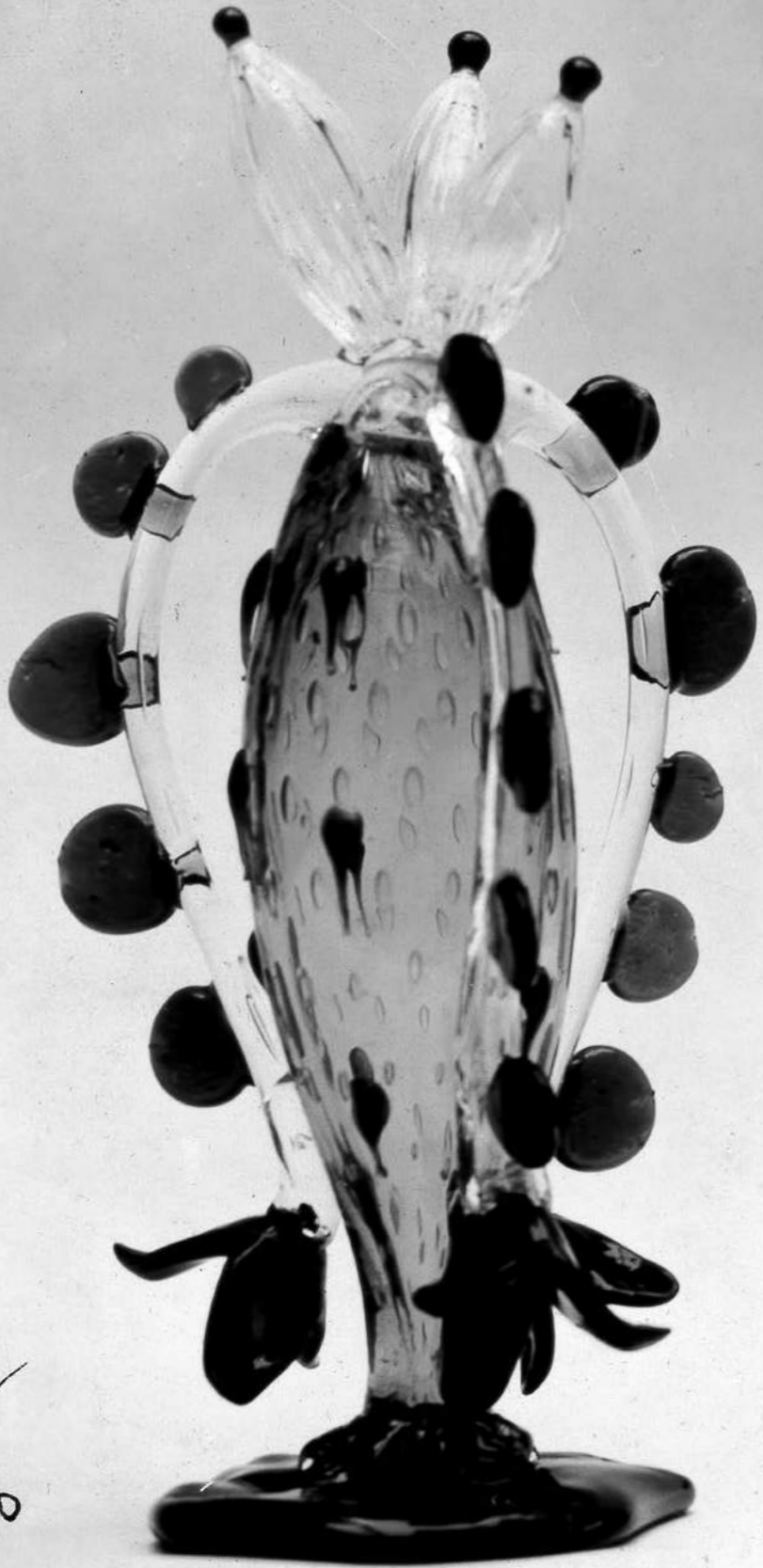
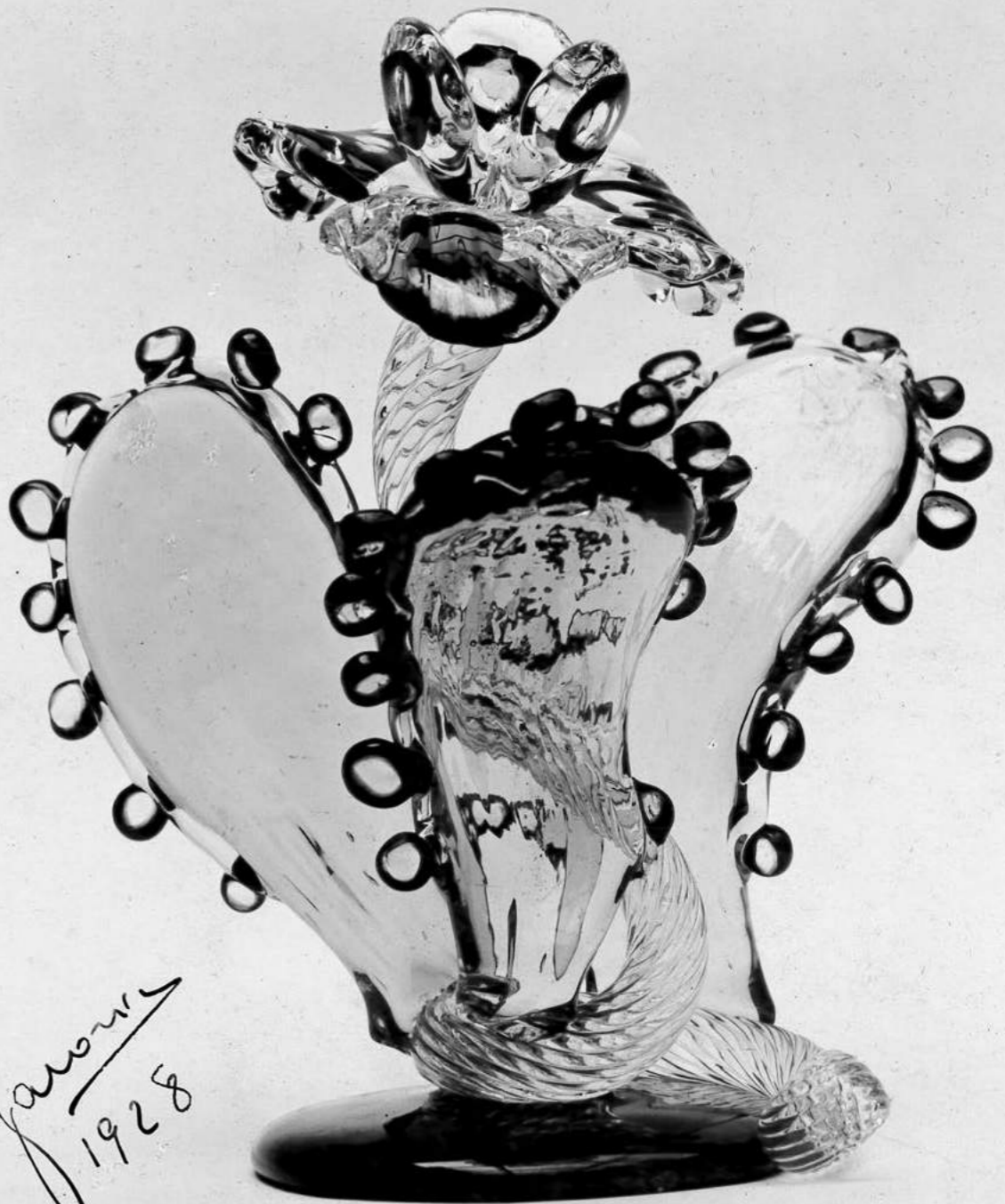


POSTCARDS FROM OUR ARCHIVE  
VENEZIA 1295

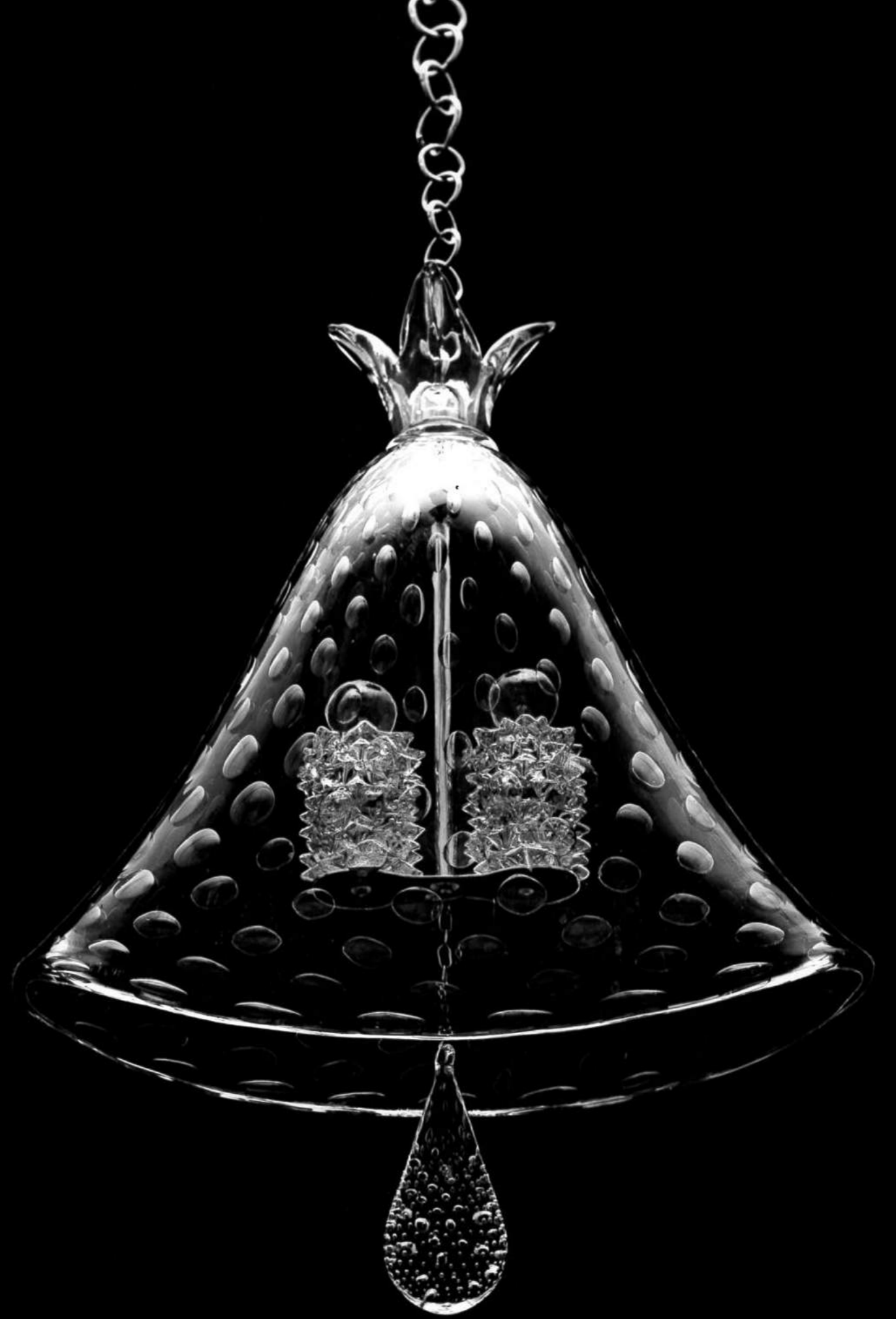
BAROVIER  
& TOSO



*Yarosi*  
*1928*



*Yarosi*  
*1928*





(ENG) A quiet journey through time, Postcards from Our Archive – Venezia 1295 gathers a constellation of images drawn from centuries of BAROVIER&TOSO creations, where light, glass, and memory converge.

This volume unfolds as a sequence of impressions, fragments of beauty suspended between past and present. Each page is a glimpse, a reflection, a trace of the extraordinary *savoir-faire* that has shaped the company since its origins in 1295.

Drawn from a wider continuity of forms, these images trace a path through time. Here, forms emerge and dissolve: delicate, luminous, sometimes monumental, always alive with the intelligence of the hand and the poetry of matter.

Together, they compose an intimate atlas of gestures and techniques: an invitation to wander and to encounter, in each fragment, a way of making that continues to unfold.

(ITA) Un viaggio silenzioso nel tempo, Postcards from Our Archive – Venezia 1295 raccoglie una costellazione di immagini tratte da secoli di creazioni BAROVIER&TOSO, in cui luce, vetro e memoria convergono.

Questo volume si dispiega come una sequenza di impressioni, frammenti di bellezza sospesi tra passato e presente. Ogni pagina è uno sguardo, un riflesso, una traccia dello straordinario *savoir-faire* che plasma l'azienda fin dalle sue origini nel 1295.

Attinte da una più ampia continuità di forme, queste immagini tracciano un percorso attraverso il tempo. Qui, le sagome emergono e si dissolvono: delicate, luminose, a tratti monumentali, sempre vive nell'intelligenza della mano e nella poesia della materia.

Insieme, compongono un atlante intimo di gesti e tecniche: un invito a vagare e a incontrare, in ogni frammento, una maestria che continua a evolversi.

BAROVIER&TOSO

Art Direction and Design:  
Studio Blanco

Photography:  
BAROVIER&TOSO Archive

Pattern Design:  
Sarah Martinon

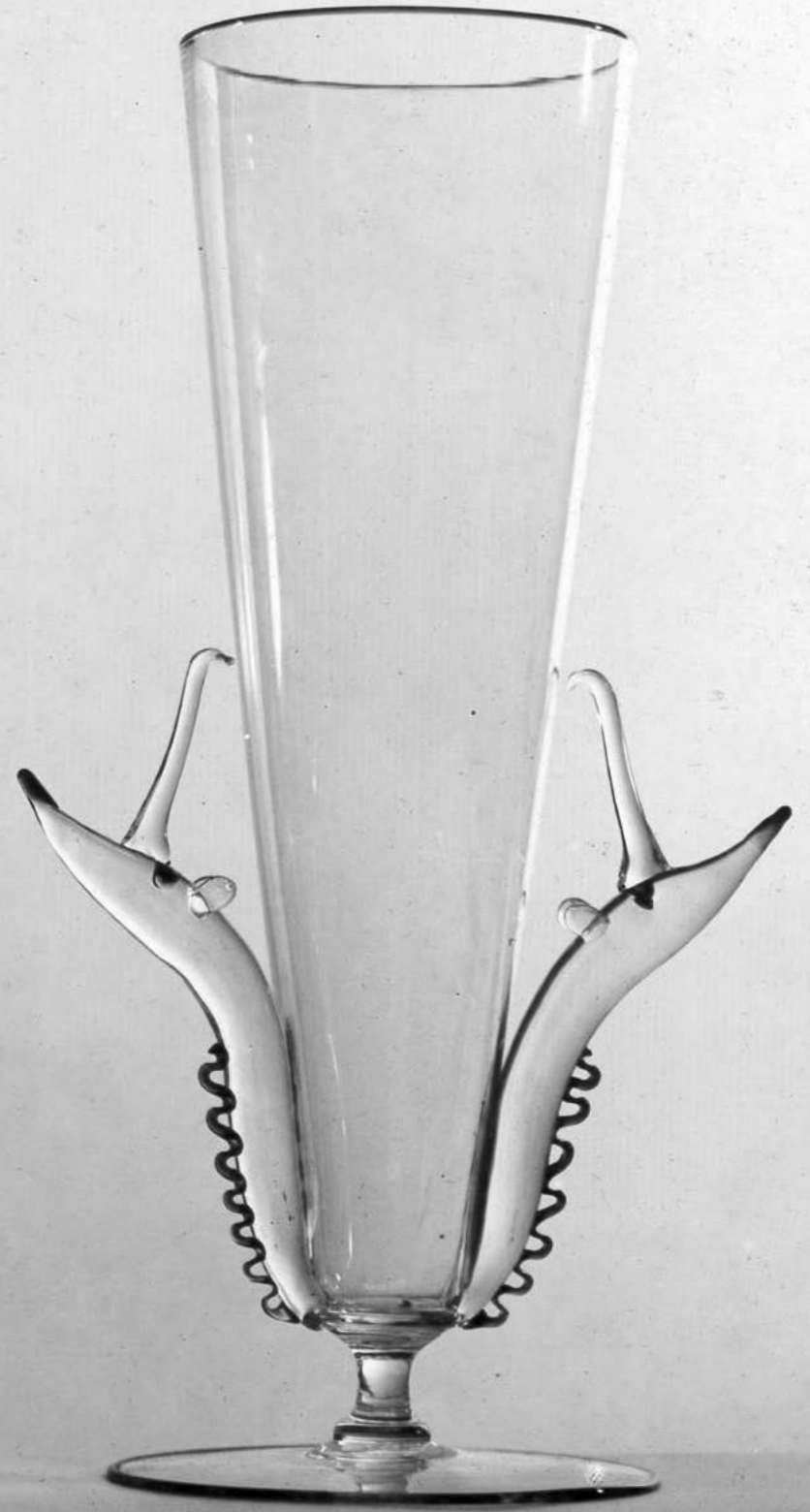
Print:  
Centroffset, April 2026

BAROVIER.COM

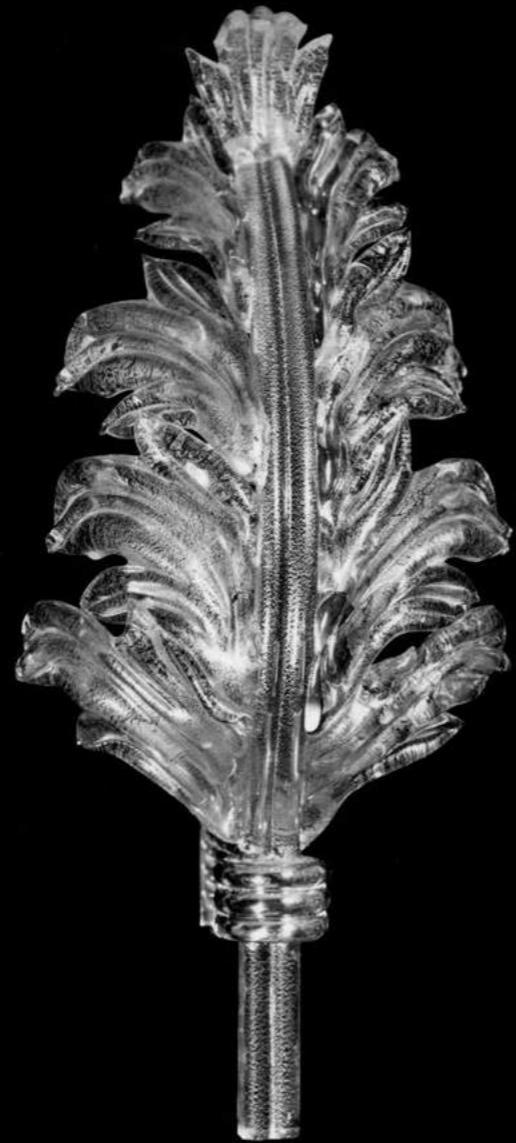
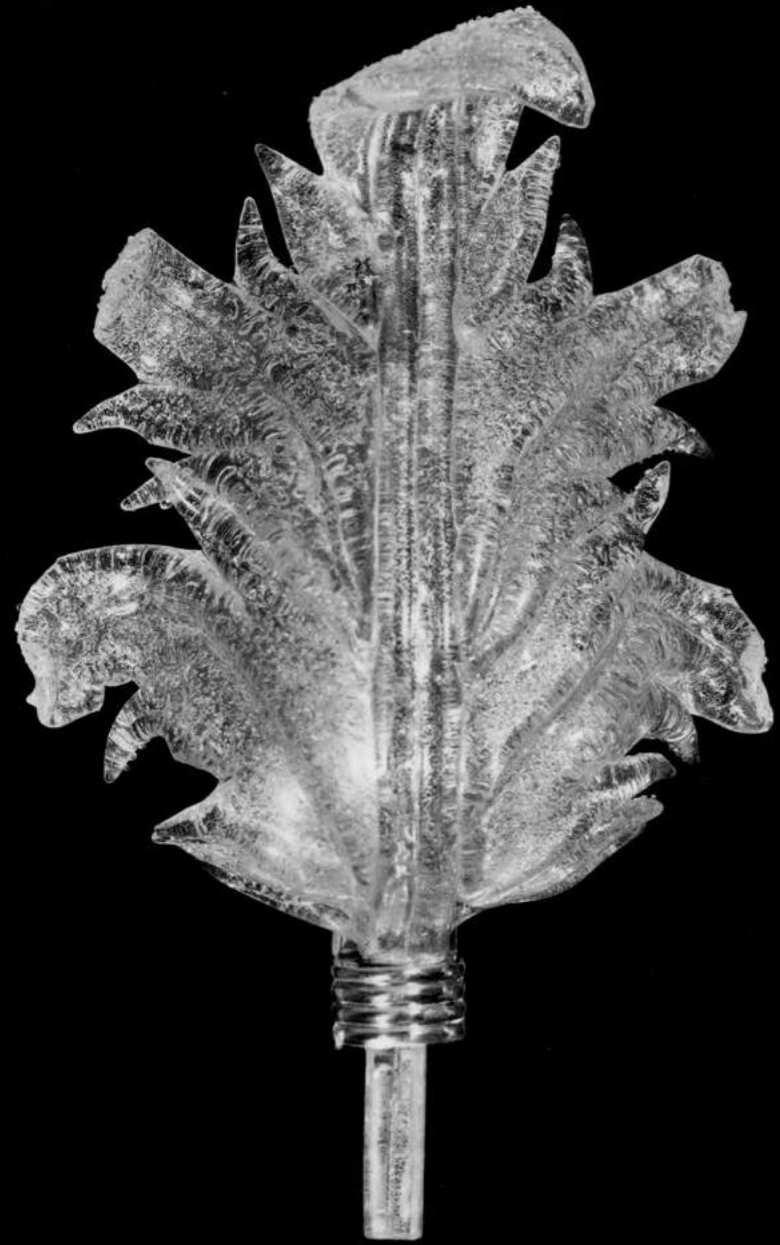




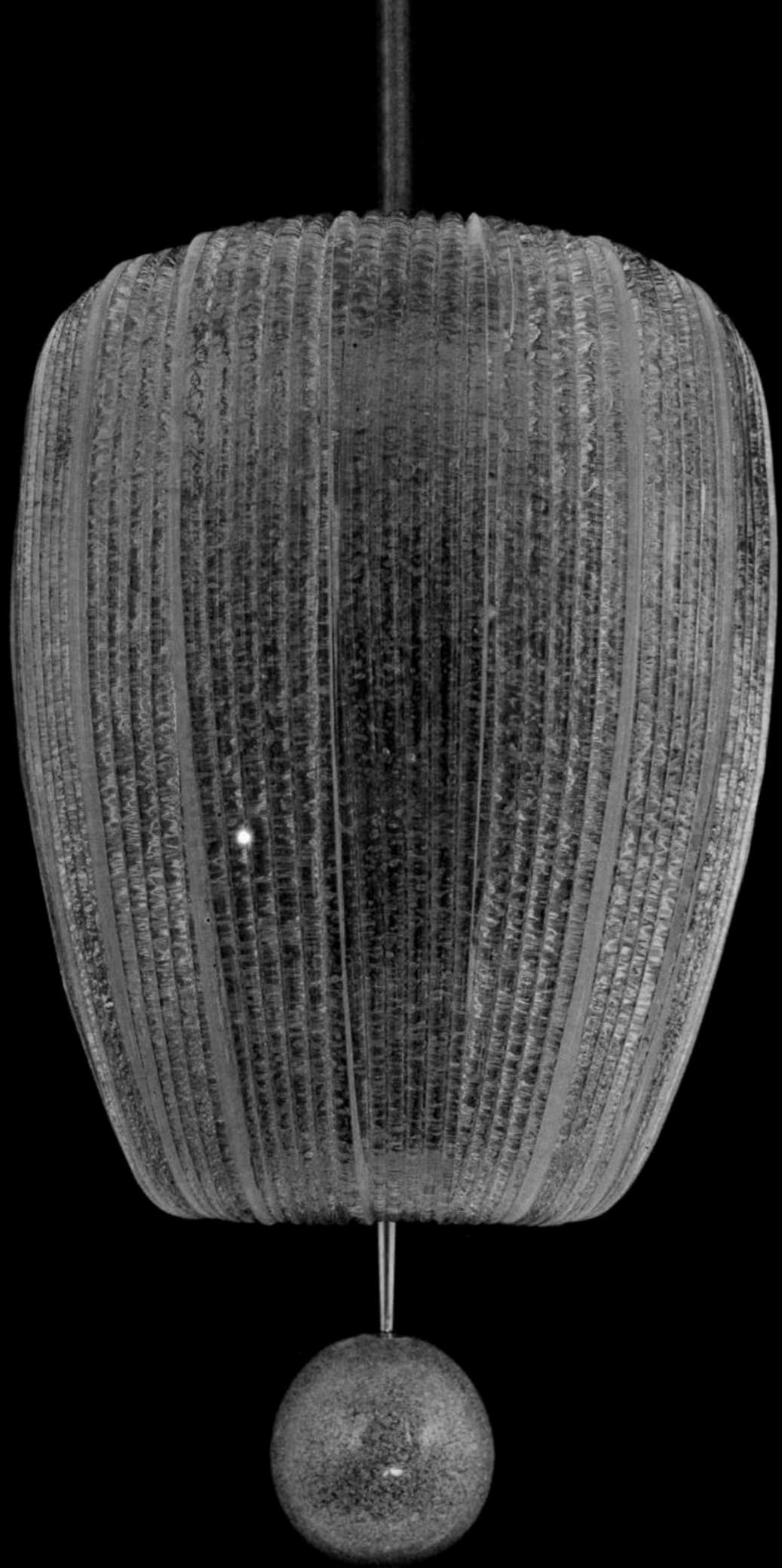




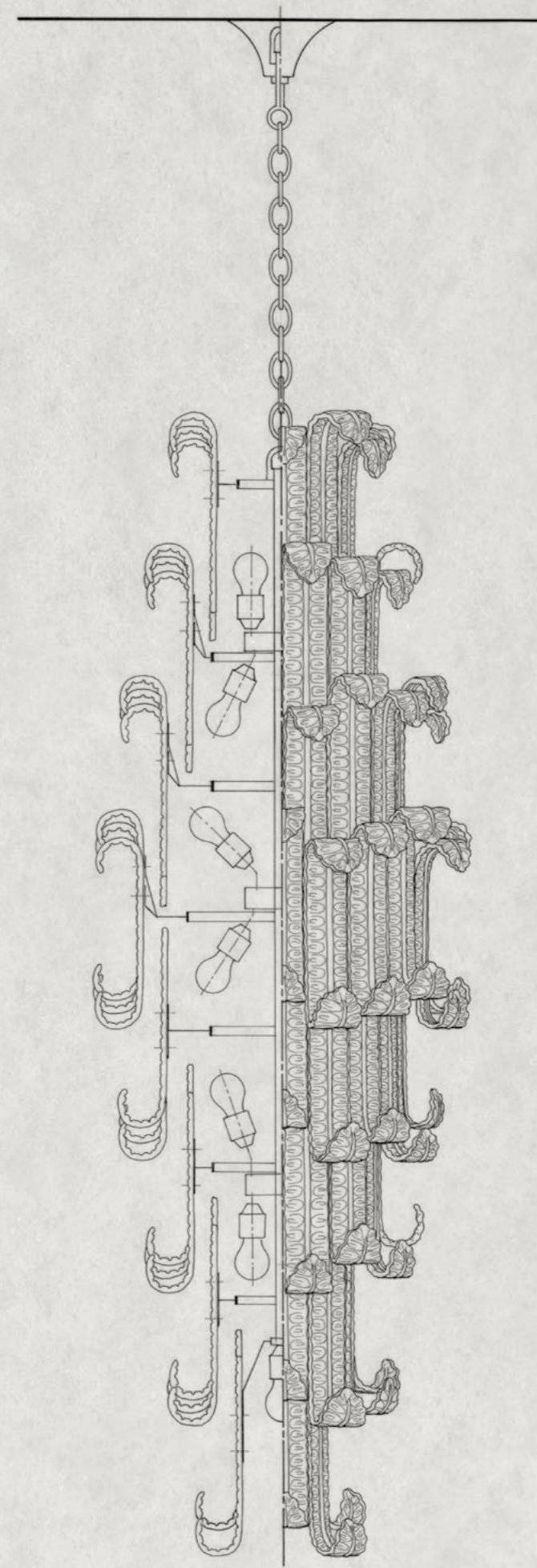
*Harold  
1930*



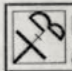






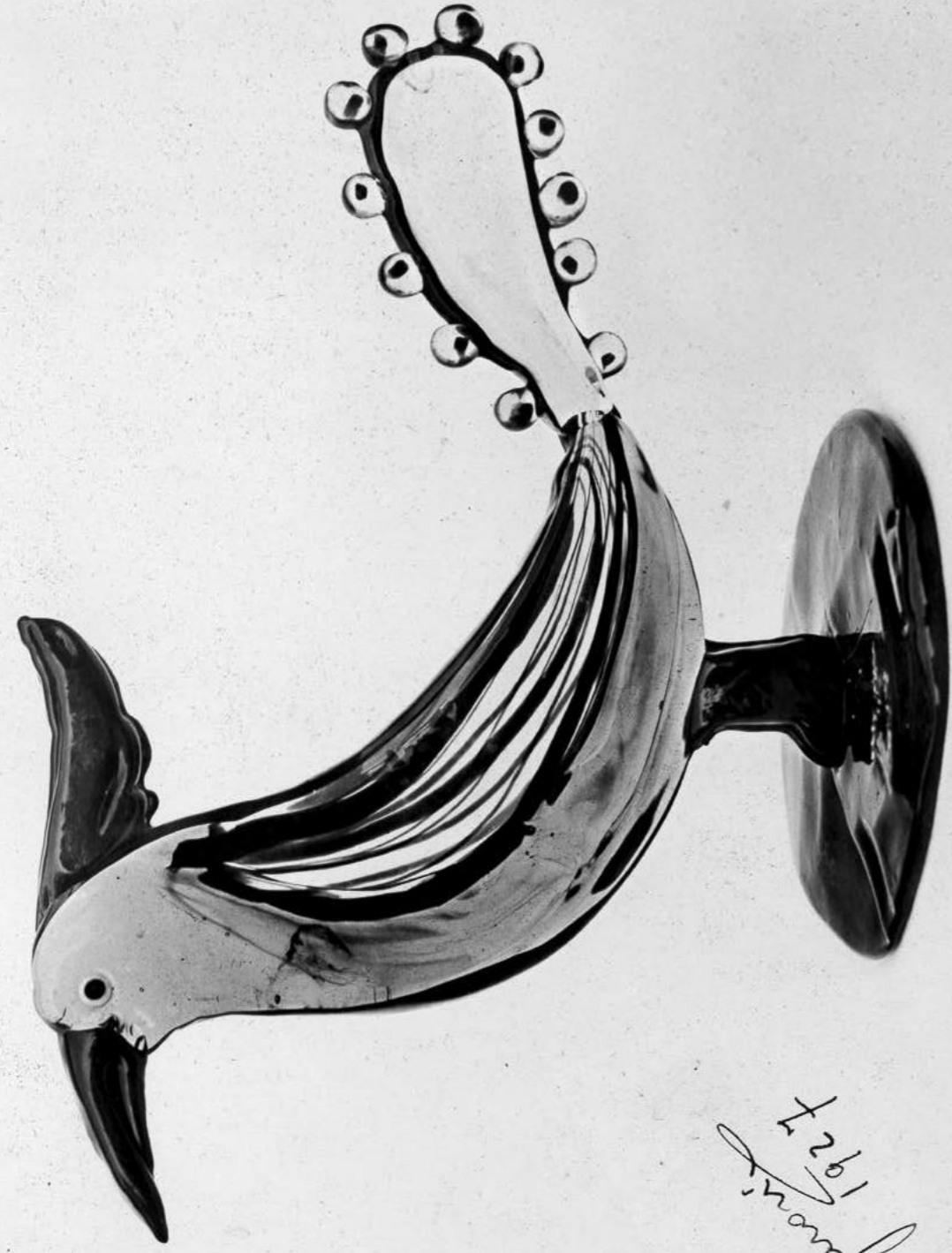


FELCI  
Ø64 H 200

	<b>barovier &amp; toso</b> <small>murano • venezia • italia</small>
DIS. 5420	
SCALA 1:5	DATA 5/86



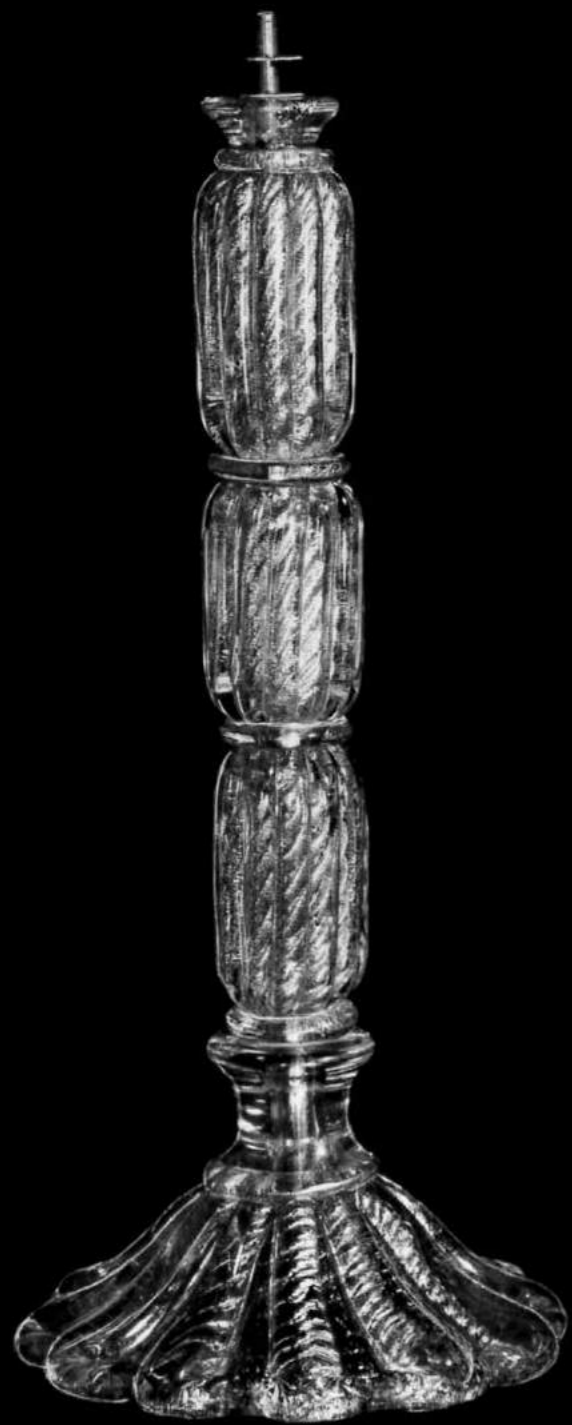


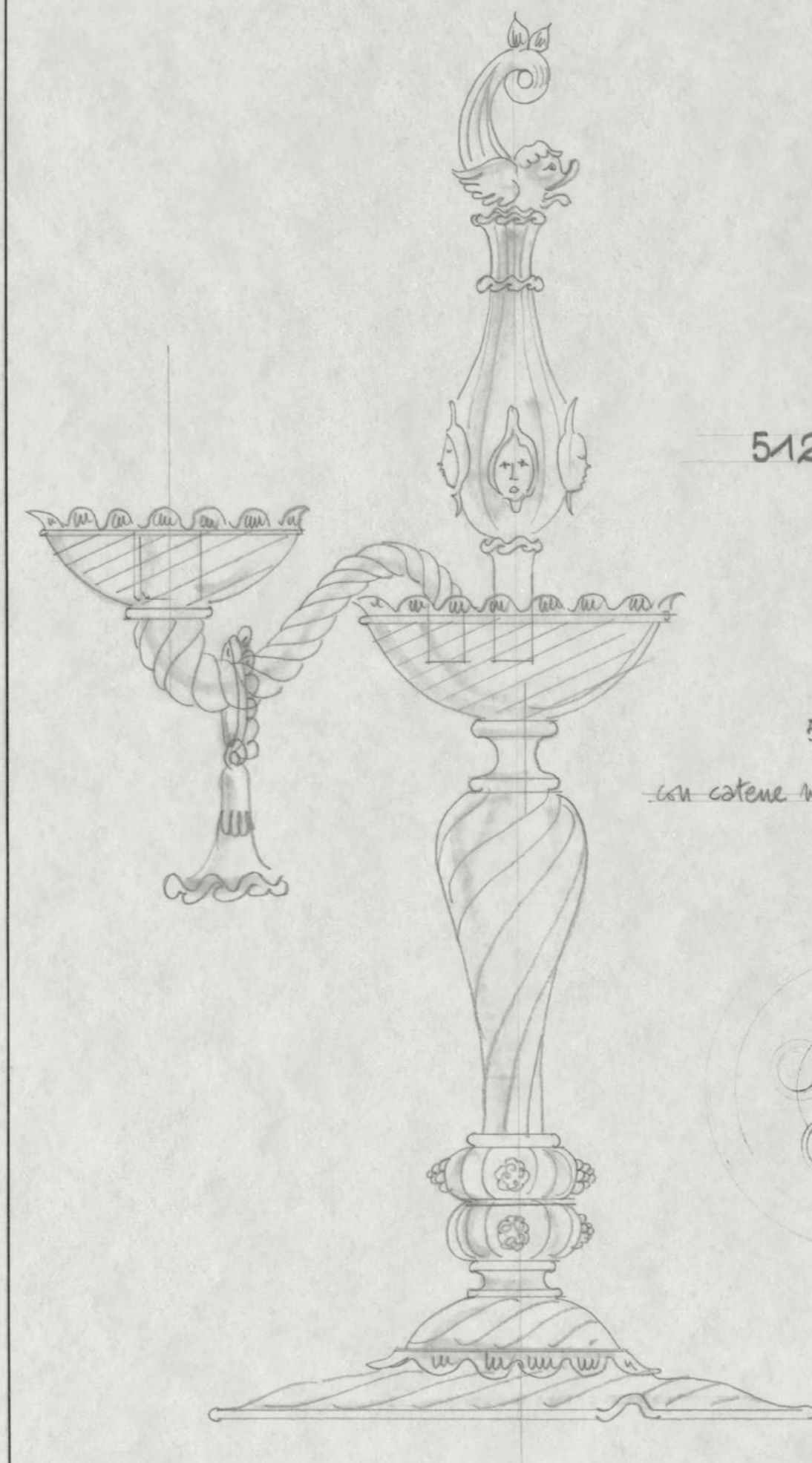


1927  
L. J. J. J.



1933  
L. J. J. J.

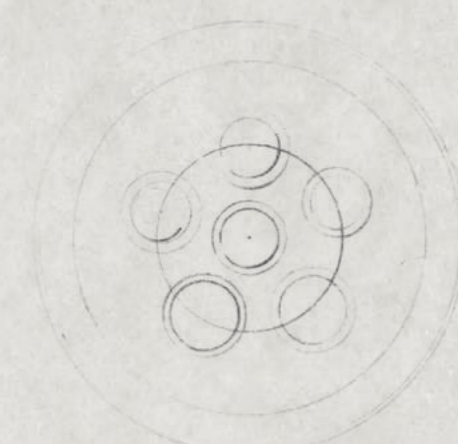




5120

5 LUCI

con catene retro

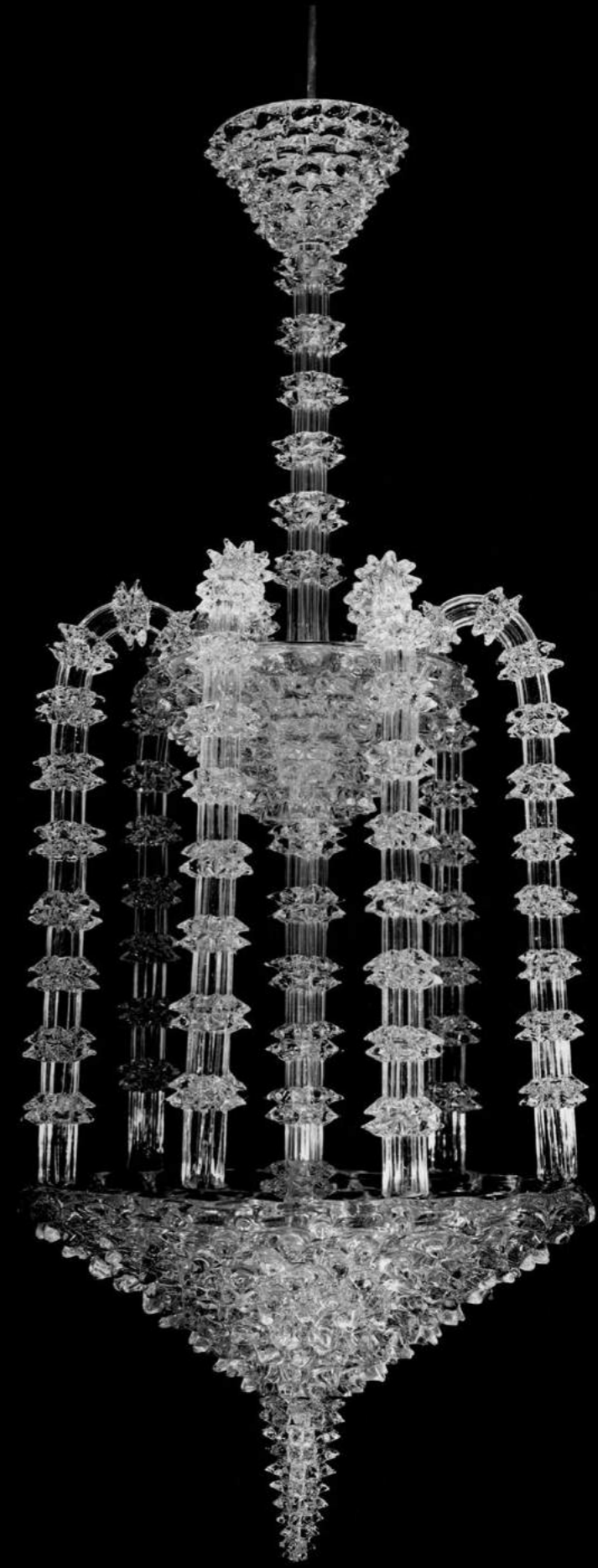
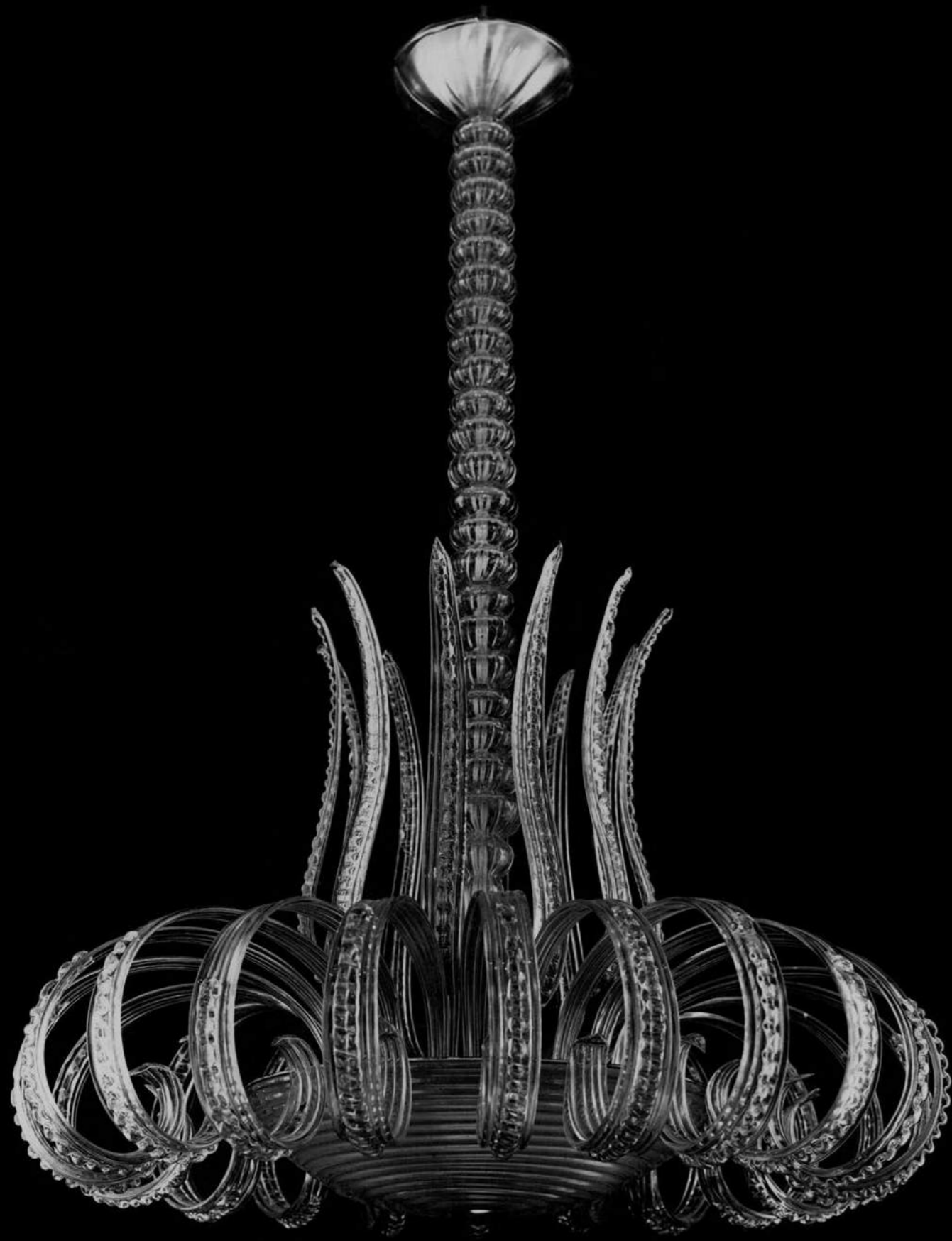


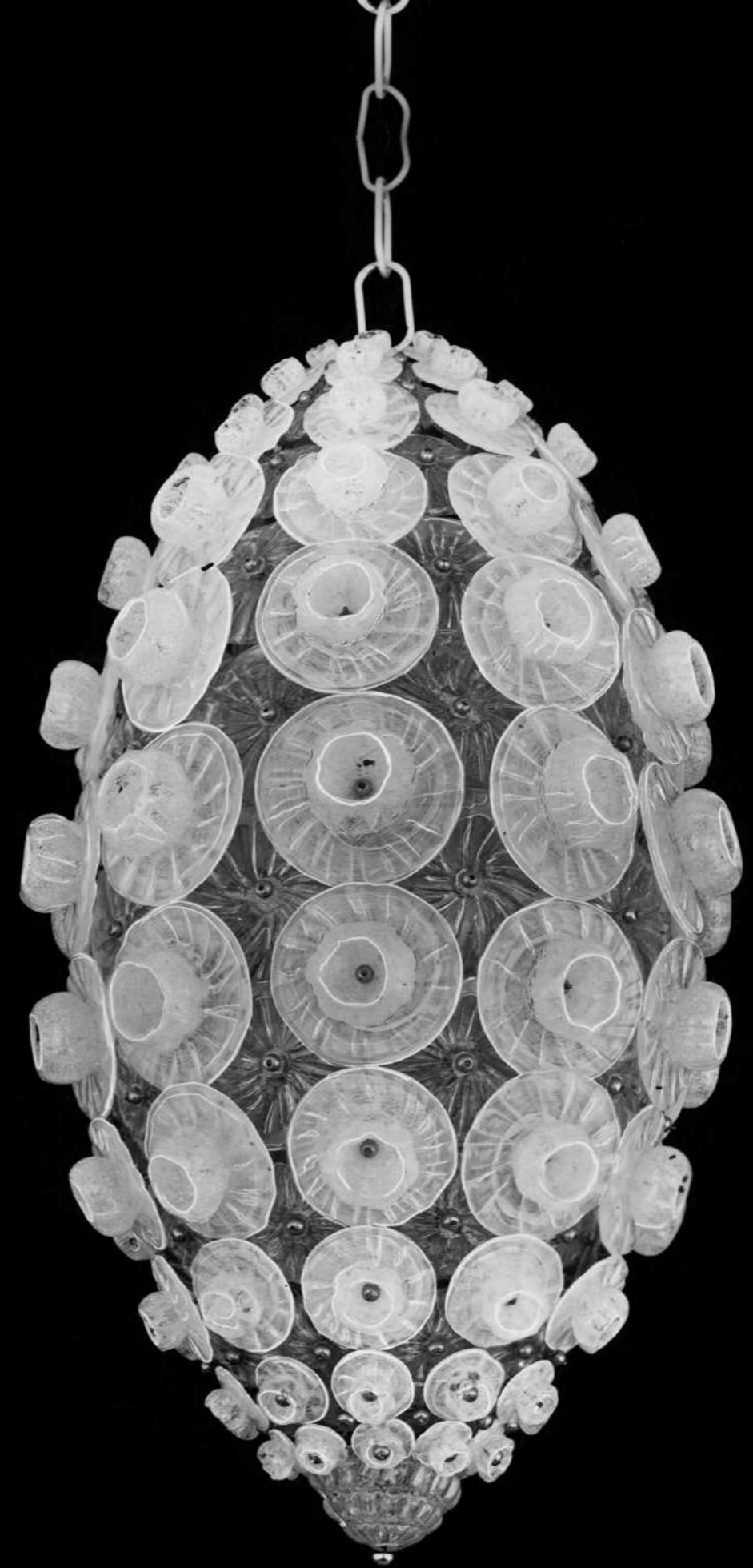
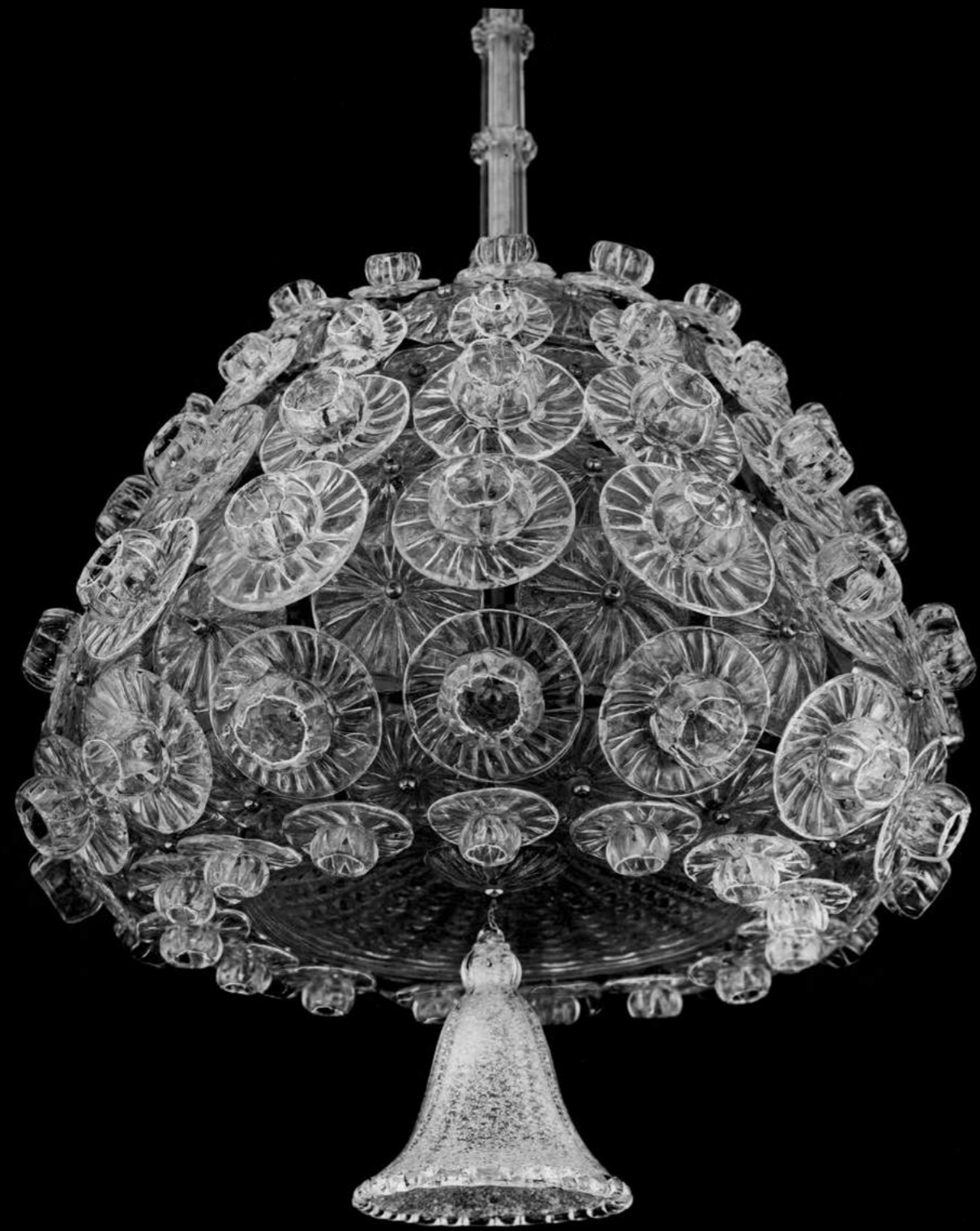
**BAROVIER & TOSO**

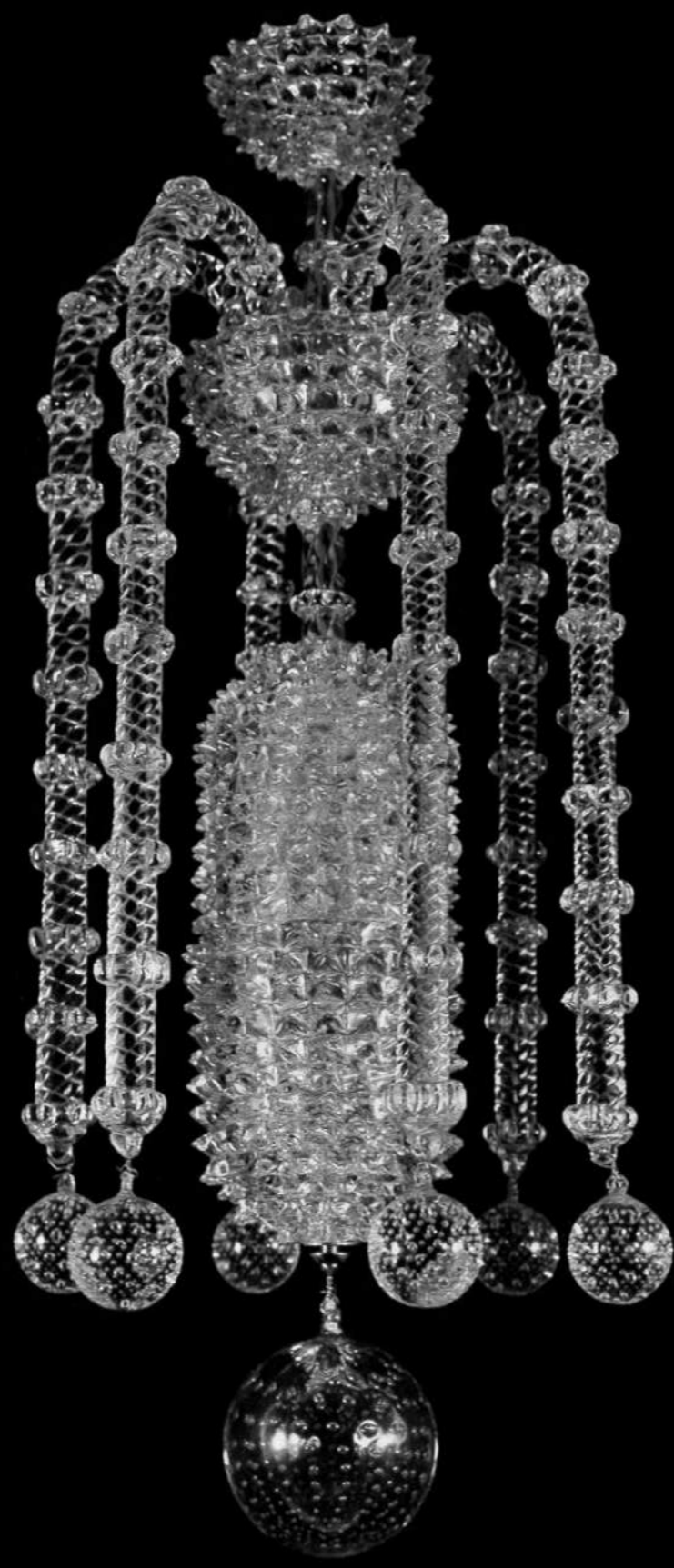
DIS. **5120**

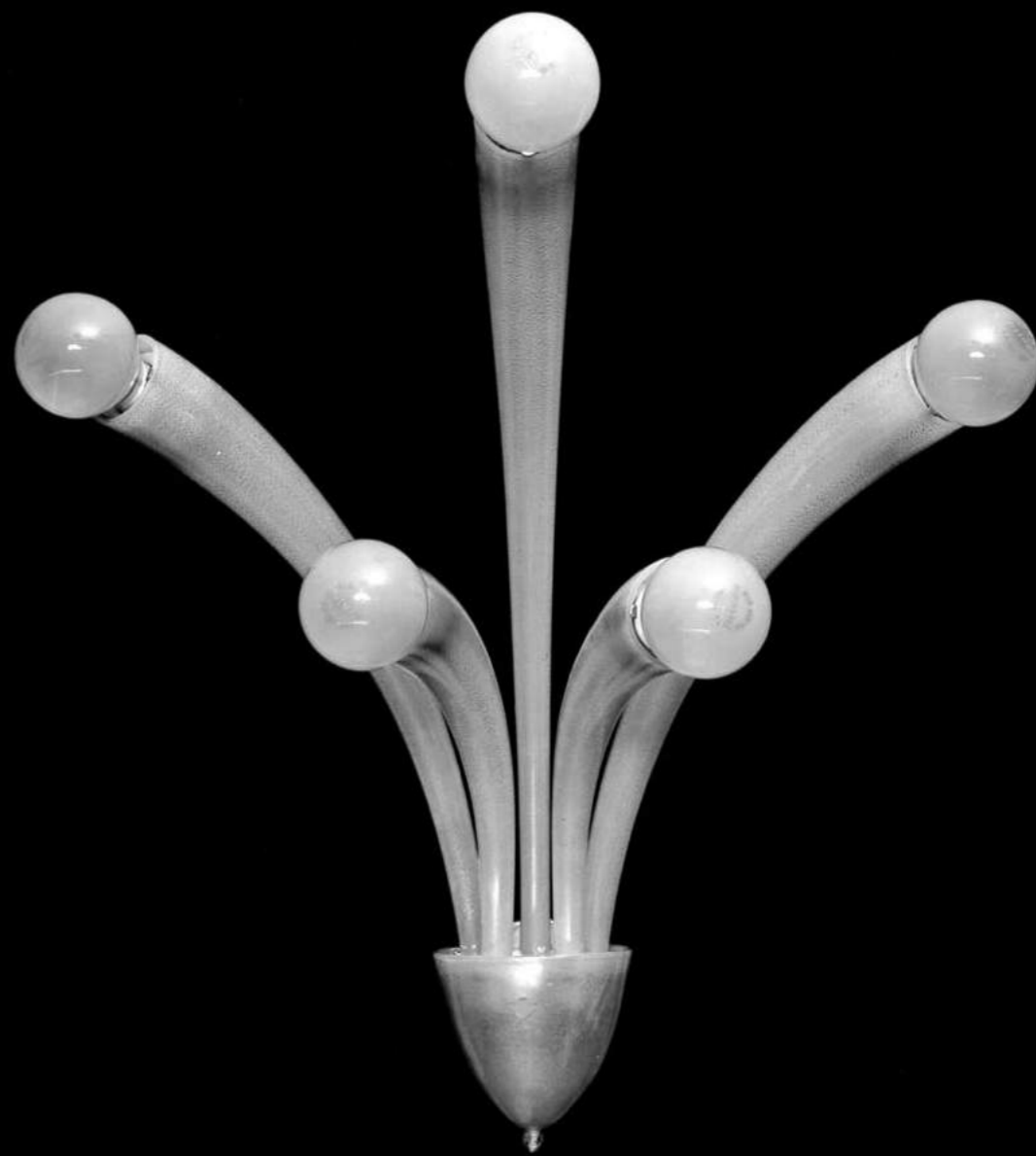
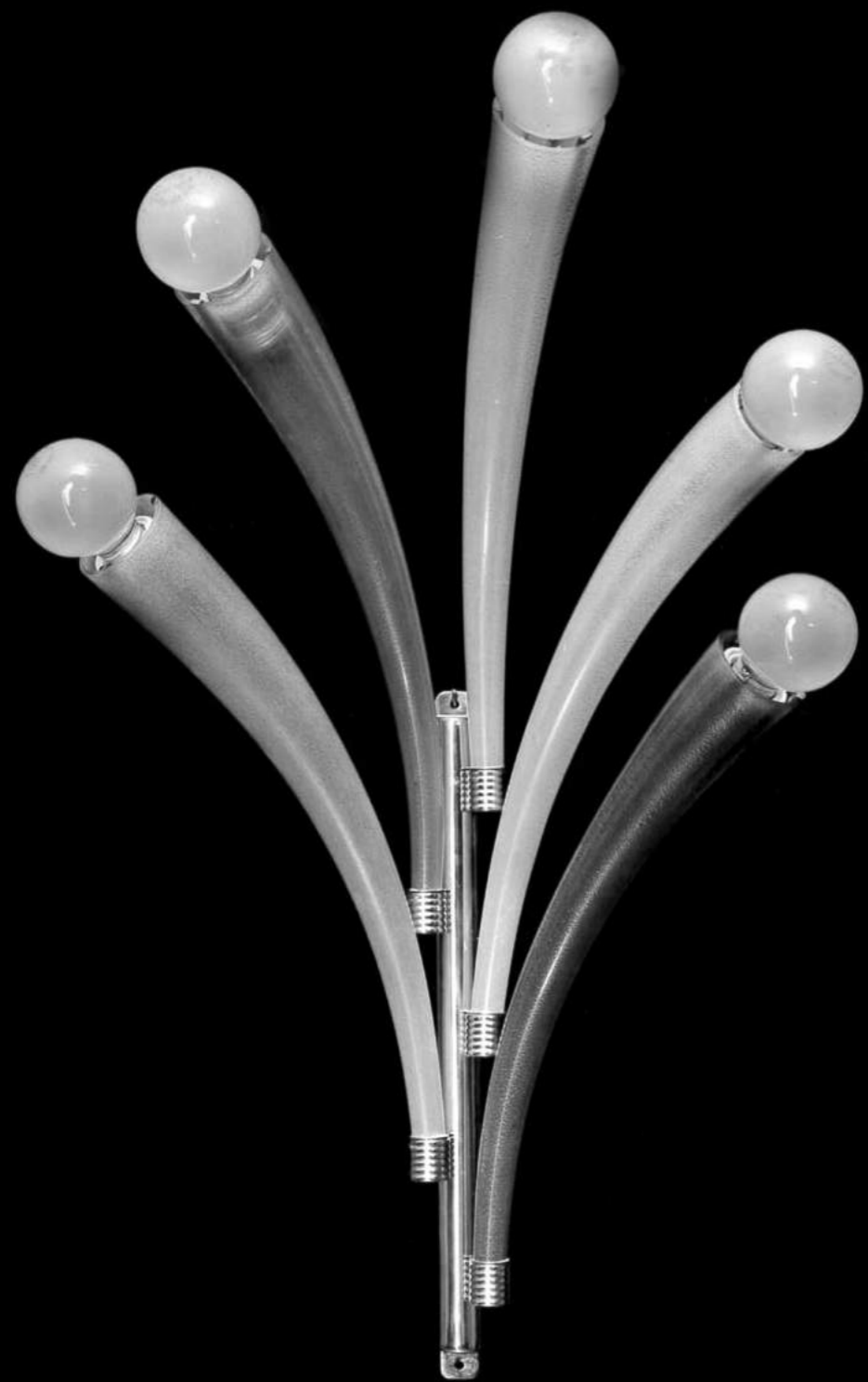
SCALA 1:1 MURANO 5-65



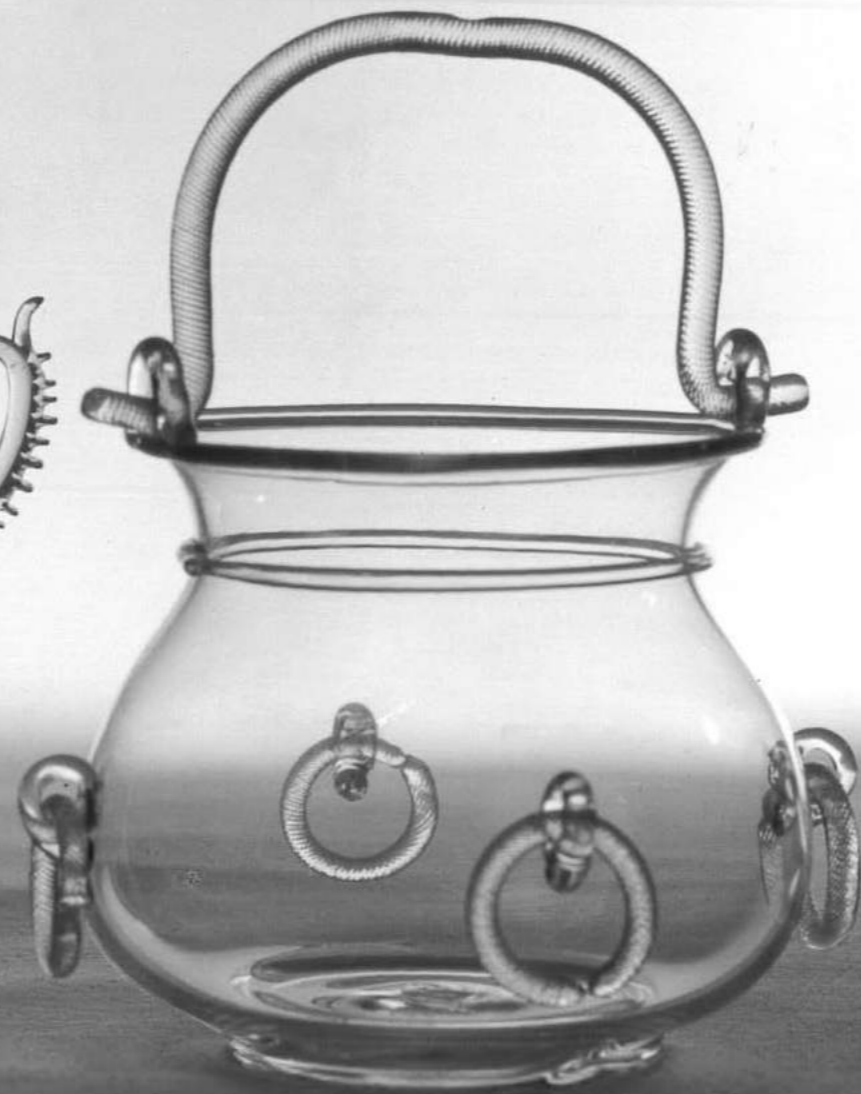
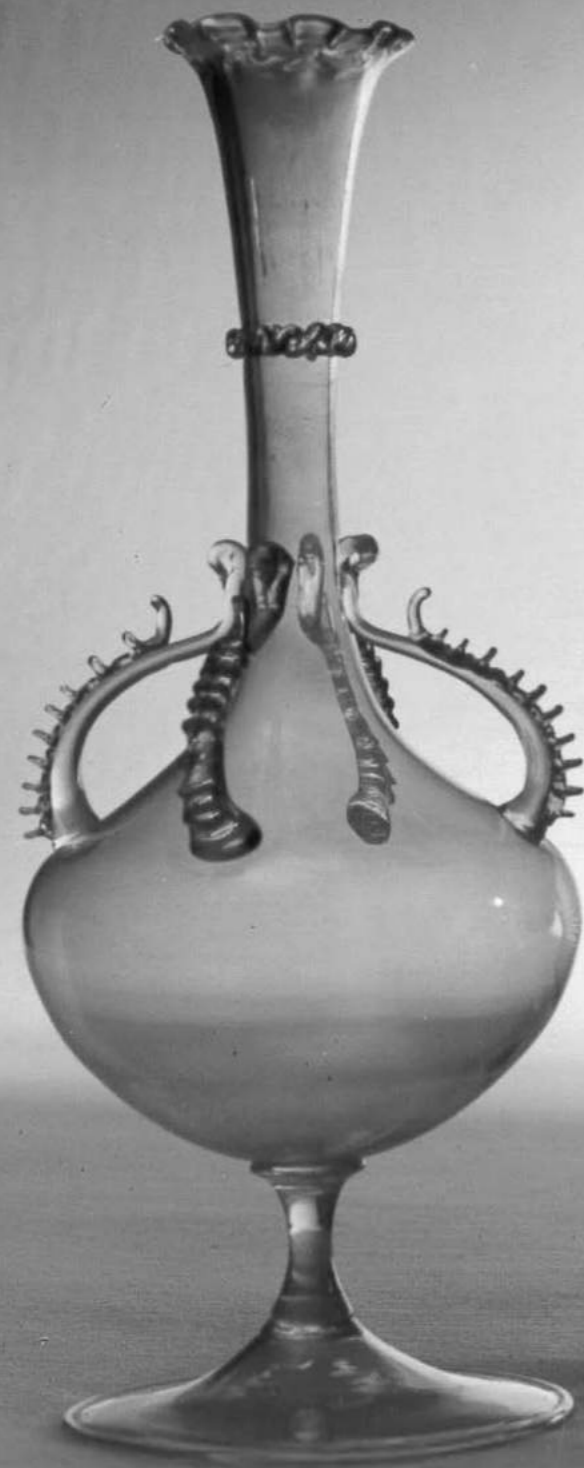


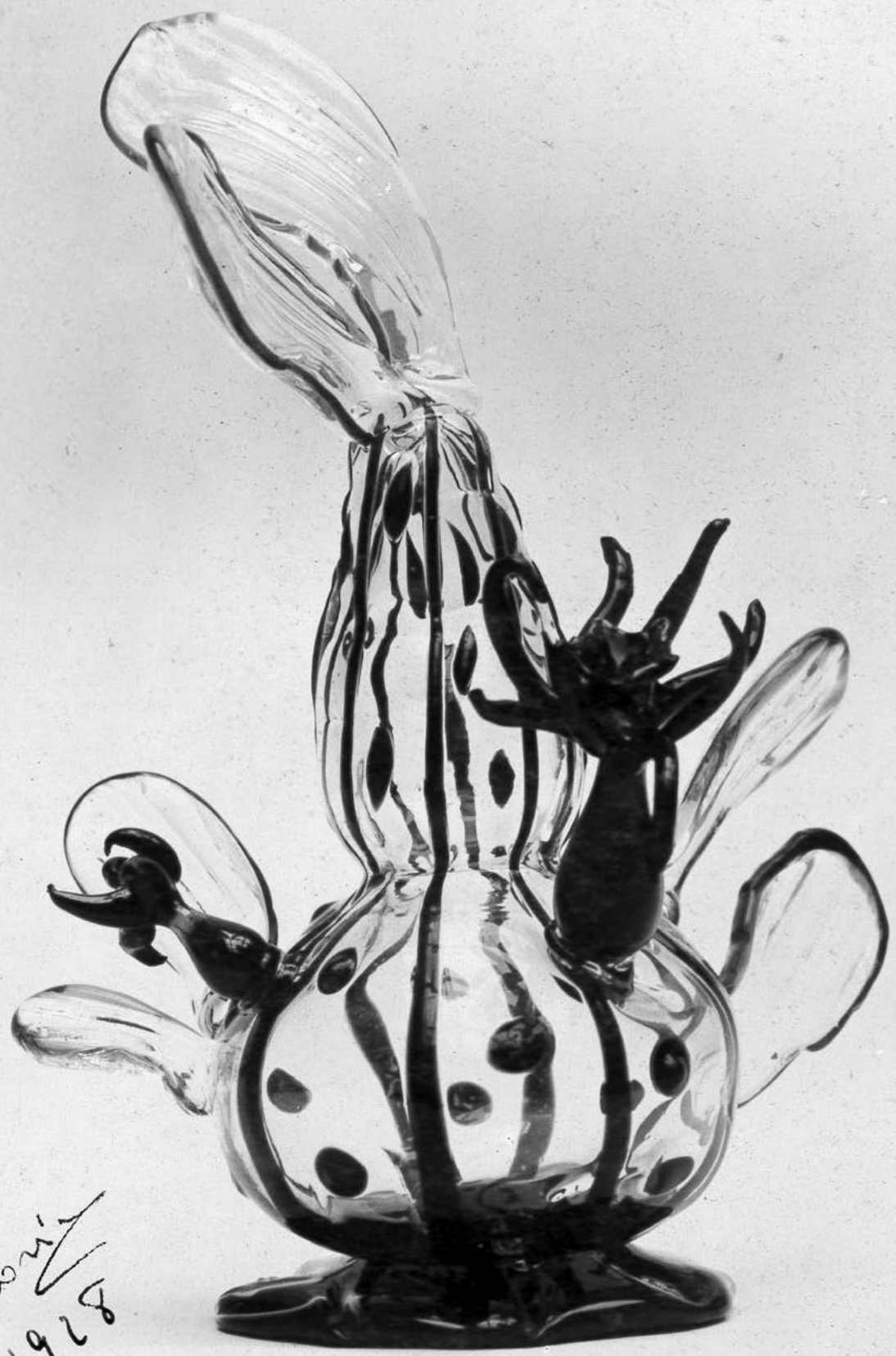












Garoni  
1928

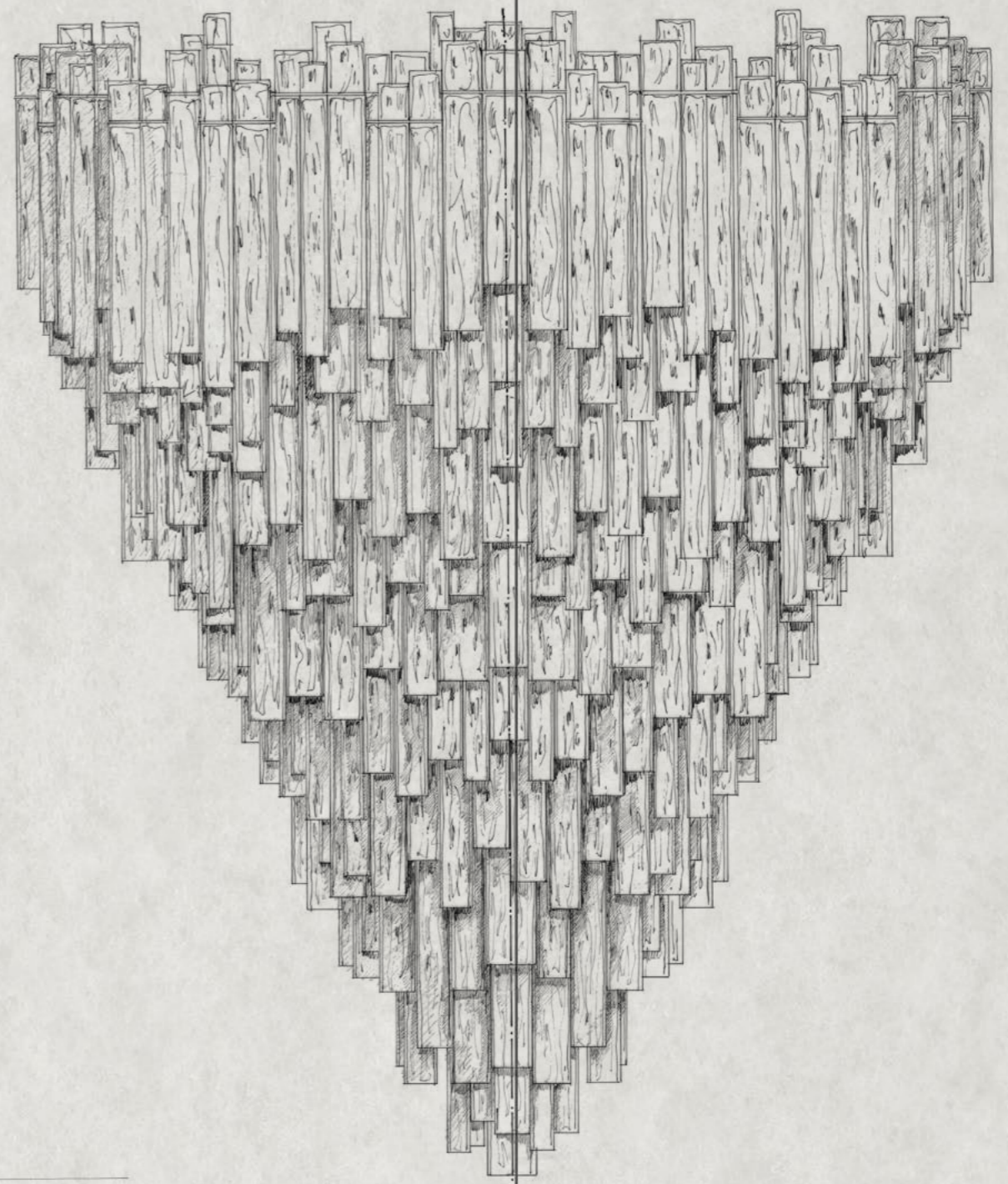


Garoni  
1928

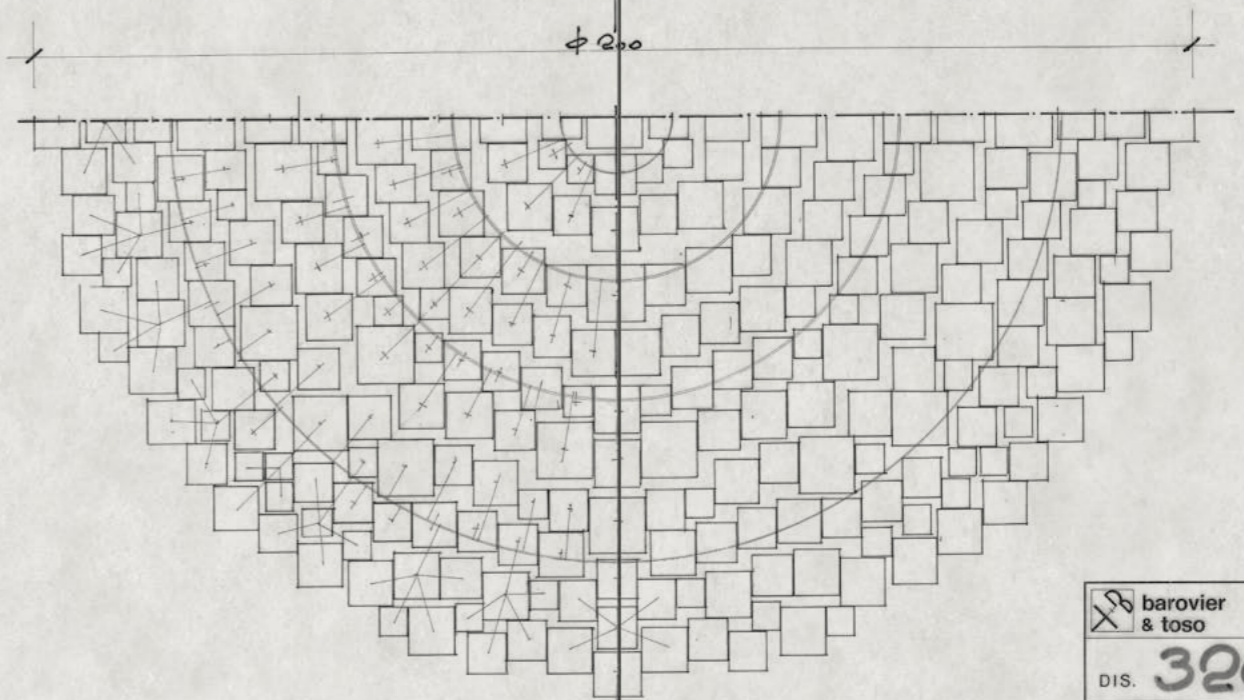


Boccioni  
1934

250 cm



φ 200



barovier  
& toso  
DIS. 320A-5  
SCALA 1:5







