

ATTENZIONE!

Togliere la corrente prima di eseguire qualsiasi collegamento elettrico o sostituire le lampadine.

- 1) Fissare a parete la staffa **A** ed eseguire il collegamento elettrico della linea di alimentazione al morsetto posto all'interno della scatola **B**.
- 2) Fissare la scatola **B** alla staffa **A** avvitando la pallina **C** poi il vetro con le viti **D**.



WARNING!

Switch off the current before connecting or relamping.

- 1) Mount mounting bracket **A** to wall and connect supply wires to terminal box inside socket cover **B**.
- 2) Secure socket cover **B** to mounting bracket **A** by screwing cap nut **C** then attach glass shade with shade mounting screws **D**.



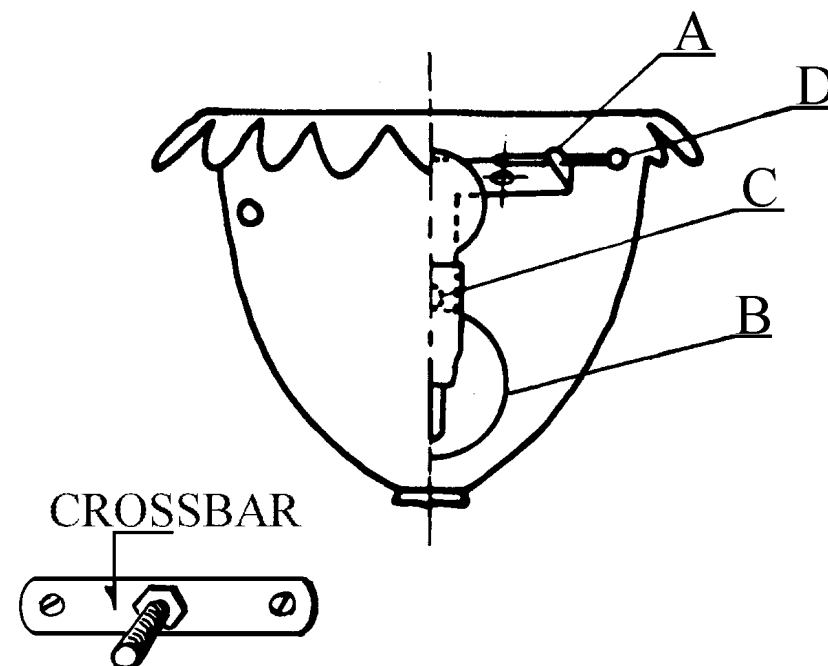
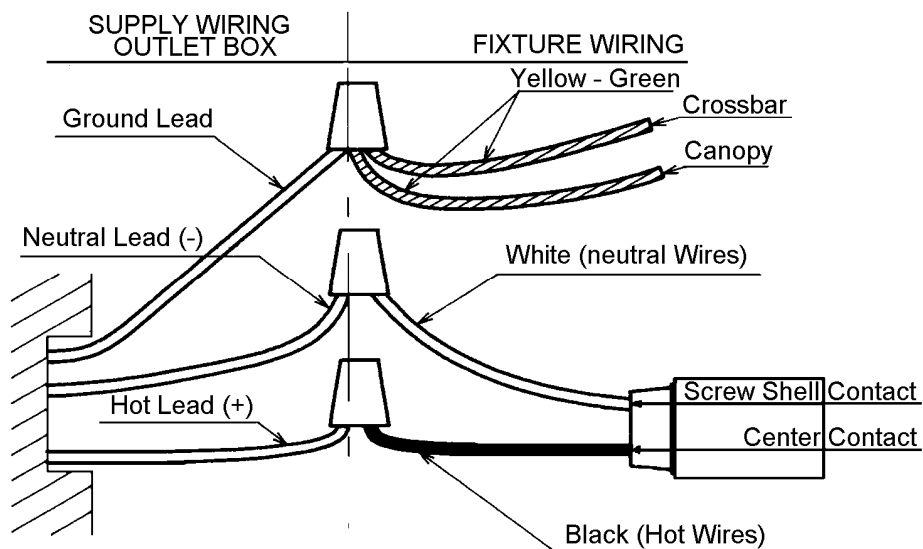
(USA) WARNING!

Switch off the current before connecting or relamping.

- 1) Mount mounting bracket **A** with crossbar to outlet box, and connect ground supply wire to ground (yellow/green) fixture wire then Black to line (Black) and White to White with wirenut.
- 2) Tuck wire into outlet box and secure socket cover **B** with cap nuts **C** then attach glass shade with shade mounting screws **D**.



CIRCUIT DIAGRAM



FANALE VENEZIANO

Applique/Wall sconce

- ☐ 5383/2/DO ☐ 5383/2/OO
☐ 5383/2/VO

Altezza/height 22 cm - 8 1/2"
Larghezza/width 25 cm - 10"
Profondità/depth 12 cm - 4 3/4"
Peso/weight 1Kg - 2,2 lb

- ☐ 100 - 120V ☐ 220 - 240V
50Hz / 60Hz 50Hz / 60Hz

N° 1 x max 60W

- ☐ E14 ☐ E12(candelabra base)

Cl. I

lampadina chiara/clear bulb

