

ATTENZIONE!

Togliere la corrente prima di eseguire qualsiasi collegamento elettrico o sostituire le lampadine.

- 1) Fissare a parete il supporto **A**, eseguire il collegamento tra il cavo della linea di alimentazione con il morsetto della scatola **B**.
- 2) Fissare la scatola **B** al supporto **A** con le borchie **C** ed avvitare la lampadina.
- 3) Con le apposite viti fissare le foglie in vetro **1** e successivamente le foglie **2**.



WARNING!

Switch off the current before connecting or relamping.

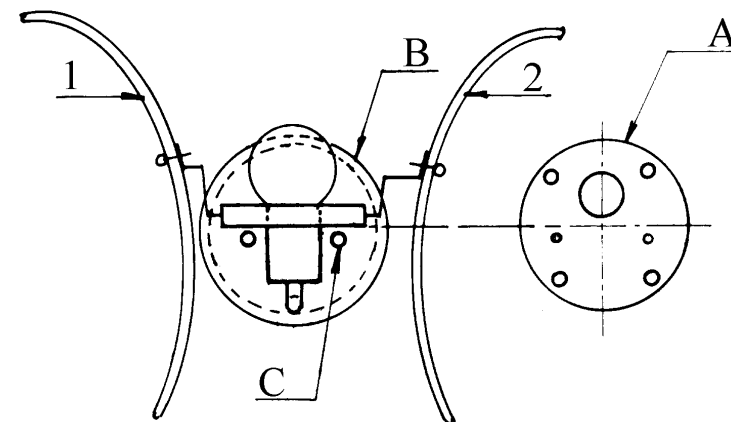
- 1) Hook the support **A** to the wall, make up the connection between the main feed line and the connector of the box **B**.
- 2) Fix the box **B** to the support **A** with the studs **C** and screw the bulb.
- 3) Fasten the glass leaves **1** with the proper screws and successively the glass leaves **2**.



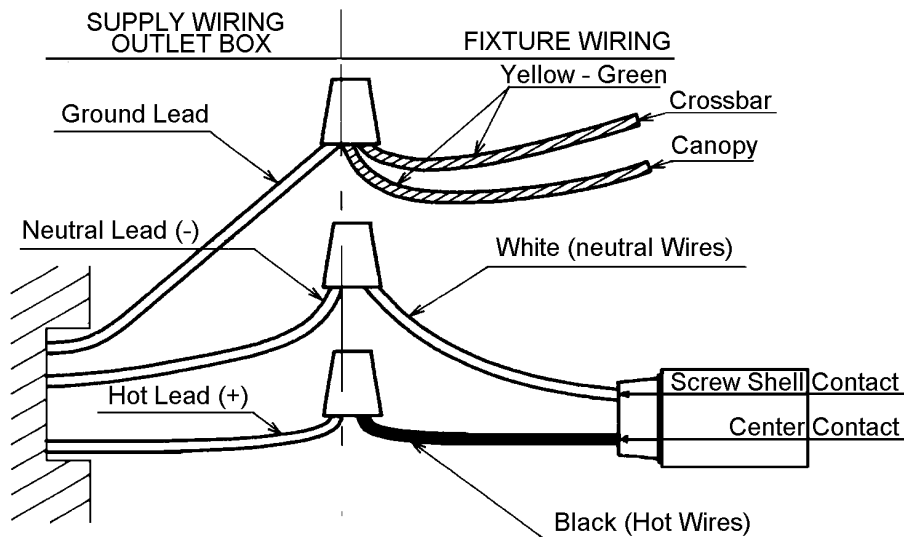
(USA) WARNING!

Switch off the current before connecting or relamping.

- 1) Hook the support **A** to the wall, make up the connection between the main feed line and the connector of the box **B**.
- 2) Fix the box **B** to the support **A** with the studs **C** and screw the bulb.
- 3) Fasten the glass leaves **1** with the proper screws and successively the glass leaves **2**.



CIRCUIT DIAGRAM



PALMETTE **Applique /Wall sconce**

□ 5310/1

Altezza/height 24 cm – 9”1/2
Larghezza/width 41 cm – 16”1/2
Profondità/depth 25 cm – 10”
Peso/weight 4 Kg – 9 lb

□ 120V
50Hz / 60Hz

□ 240V
50Hz / 60Hz

□ N° 1x max 60W □ N° 1x max 40W

□ E14 □ E12(candelabra base)

Cl. I

